



**The Arc**  
Ocean County Chapter

[Step Up for the Arc Walk](#)

We invite you all to join us Saturday, October 12th at the FirstEnergy Park for the annual walk in the park family fun day. Come celebrate the individuals we serve at this family friendly day filled with activities, refreshments, music, and more! Be sure to create or join a team and start your fundraising on [CrowdRise](#).

Interested in volunteering, or becoming a sponsor? Contact [Jasmine](#), Development Intern for more info.



SATURDAY  
OCTOBER 12,  
2019

**STEP UP  
FOR THE  
ARC  
WALK**

THE ARC, OCEAN COUNTY CHAPTER IS RAISING FUNDS TO SUPPORT OUR PROGRAMS AND SERVICES BENEFITING INDIVIDUALS WITH INTELLECTUAL AND DEVELOPMENTAL DISABILITIES.

FIRSTENERGY PARK - HOME OF THE LAKEWOOD BLUECLAWS

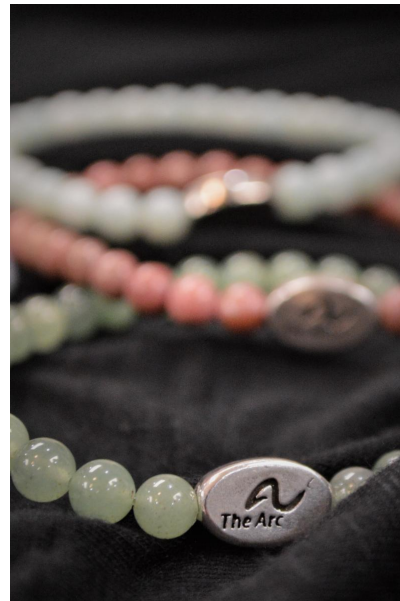
WALK  
CELEBRATE  
DONATE

[Journey's and Discovery Hand-Made Bracelets](#)

After receiving a grant from the [Ocean County Cultural and Historical Society](#), the Journey's and Discovery Training Center has designed over 100 bracelets dedicated to different mental health disorders.

Each hand-made bracelet represents a different mental health disorder:

- Blue & Yellow represents Down Syndrome
- Blue & White represents Autism
- Green, Blue, Purple, Yellow & White represents intellectual disability
- Pink represents Anxiety
- Purple represents OCD



Are you interested in purchasing a hand-made mental health awareness bracelet?

Yes, I would love to!

Select

No thank you.

Select

## Enjoying the Fruits of Their Labor

The North Bay Adult Training Center began growing vegetables and herbs in 2014 as a fun summer activity for the participants.

Nowadays the the produce is sold to employees of The Arc as a fundraiser for the Step Up for The Arc Walk, along with being used as ingredients during the cooking classes.



## BlueClaws Community Partner Fundraiser

The Arc, Ocean County sold over 600 tickets to four different [BlueClaws](#) games during the months of May, June and July, which fund-raised over \$2,000!

With every ticket sold, a portion of the profit went directly to the programs and services The Arc, Ocean County provides which supports 1,500 individuals with intellectual and developmental disabilities.



## #PayFair4DirectCare

Join The Arc, Ocean County as we support the Coalition for a [DSP Living Wage campaign](#). It's critical Governor Murphy, Senate President Sweeney and Speaker Coughlin see the faces and hear the voices of the thousands of people across New Jersey who support raising wages for Direct Support Professionals (DSPs)

#WeCantWait for #PayFair4DirectCare



Donate Today

The Arc, Ocean County Chapter | 732-363-3335 | [info@arcocean.org](mailto:info@arcocean.org) | [www.arcocean.org](http://www.arcocean.org)

STAY CONNECTED



